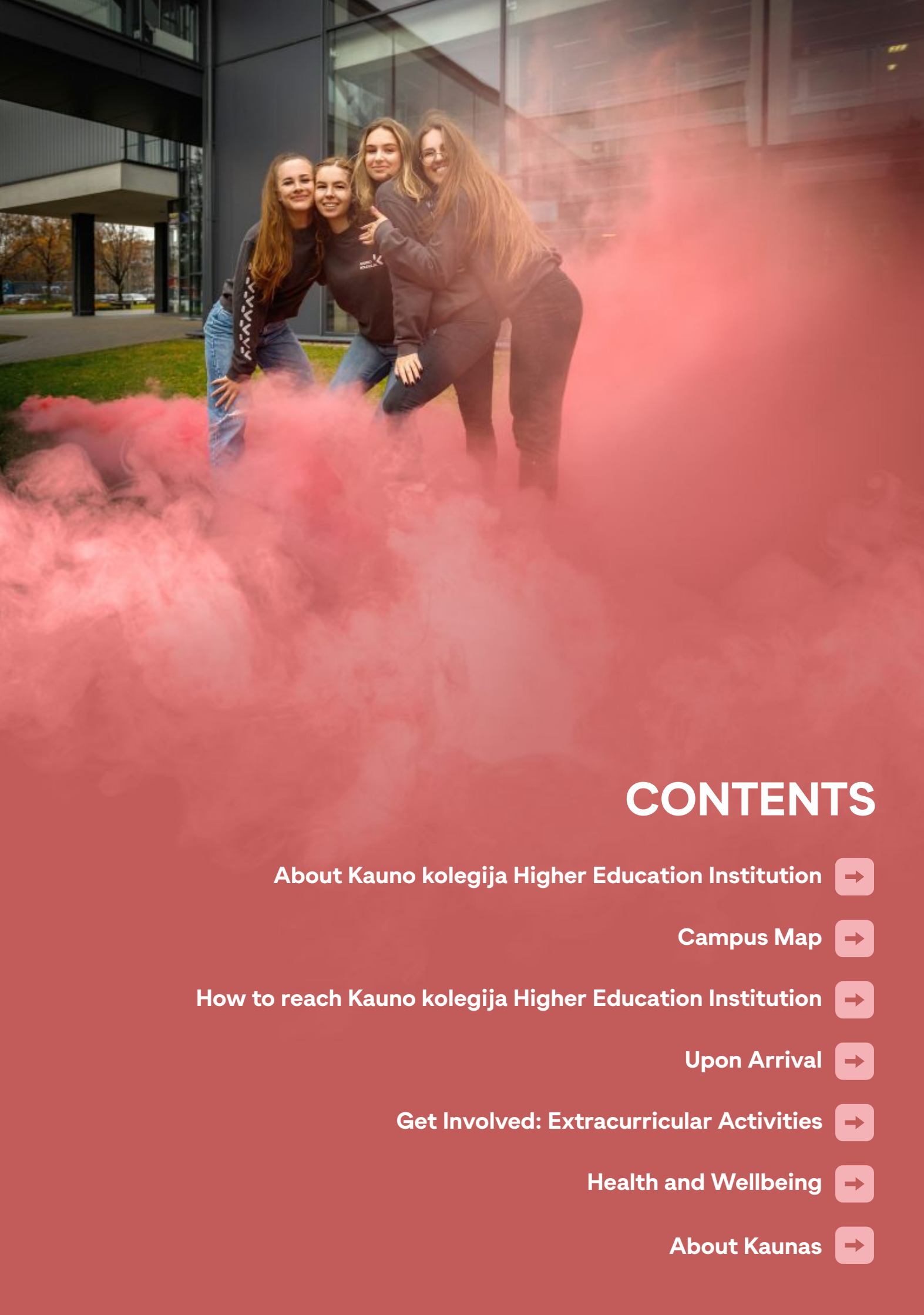


# SURVIVAL GUIDE

for foreign students



# CONTENTS

About Kauno kolegija Higher Education Institution →

Campus Map →

How to reach Kauno kolegija Higher Education Institution →

Upon Arrival →

Get Involved: Extracurricular Activities →

Health and Wellbeing →

About Kaunas →



# Unit for International Relations



**Pramonės pr. 22A-106, Kaunas**



**For exchange students:** [incoming@go.kauko.lt](mailto:incoming@go.kauko.lt)



**For full-time students:** [admission@go.kauko.lt](mailto:admission@go.kauko.lt)



**ESN KK E-mail:** [president@kk.esn.lt](mailto:president@kk.esn.lt)



# About Kauno kolegija Higher Education Institution



Kauno kolegija Higher Education Institution is one of the major state professional higher education institutions in Lithuania. It was established on the 1st of September, 2000 after the binary higher education system consisting of two types of higher education provided by colleges and universities was introduced in Lithuania.



Success of Kauno kolegija Higher Education Institution is based on the partnership among students, teachers and employers in the process of training specialists who acquire higher education and practical skills within usually three years period. Close cooperation between Kauno kolegija Higher Education Institution and employers has a major impact on student employment in enterprises and other institutions.







International cooperation is one of Kauno kolegija Higher Education Institution priority areas. Participation in international networks and programmes ensures active implementation of provisions of the Bologna Process in academic and other activities. International cooperation aims for improving the quality of studies, applied research and ensures the compliance of Kauno kolegija Higher Education Institution graduates skills with continuously changing needs of international labor market.



Kauno kolegija Higher Education Institution community cooperates with other education and research institutions, organizations and associated business structures. This cooperation is carried out according to the aims of the study process, needs of international labor market and the strategy of regional development.





## Main facts and figures



Over **5000** students



Around **800** staff members



Students are taught across **5** faculties located in Kaunas City and a regional department in Tauragė



Around **200** incoming students and over **350** outgoing students per year



Over **250** foreign partners



**Top** positions are held in ratings of Lithuanian higher education institutions

# Campus Map

**Faculty of Technologies**  
Pramonės pr. 22

**Unit for  
International Relations**  
Pramonės pr. 22A

**Faculty of Business**  
Pramonės pr. 20

**Dormitory No. 2**  
V. Krėvės pr. 92

**Dormitory No. 3**  
V. Krėvės pr. 90

**Dormitory No. 1**  
Taikos pr. 121

## FACULTIES AND DORMITORY OUTSIDE CAMPUS:

### Faculty of Arts and Education

📍 A. Mackevičiaus str. 27

### Faculty of Medicine

📍 K. Petrausko str. 15

📍 Puodžių str. 13

📍 Muitinės str. 15

### Dormitory No. 4

📍 Kalniečių str. 126

# How to reach Kauno kolegija Higher Education Institution

Pramonės pr. 22A, Kaunas

## TRANSPORT SCHEDULES:

Trafi I>>



### Bus and trolley schedules:

[www.trafi.lt](http://www.trafi.lt)

### Tickets:

Ziogas

(Get it on Google App Store / Apple store)



or



### Intercity bus schedules:

[www.autobusubilietai.lt/en](http://www.autobusubilietai.lt/en)

### Tickets:

Buy online or use app „Autobusų bilietai“

(Get it on Google App Store / Apple store)



### Train schedules:

[www.ltglink.lt/en](http://www.ltglink.lt/en)

### Tickets:

Buy online or at the train station

## TAXI APPS:



## CAR / BIKE RENTAL APPS:



## THE EMERGENCY SERVICES PHONE NUMBER 112

Police • Emergency Medical Service • Fire and Rescue Service • Environmental Protection Service



# FROM VILNIUS AIRPORT

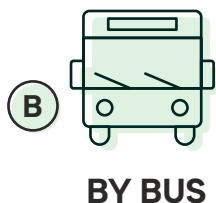
1

**After your arrival at Vilnius International Airport, you should go to the bus or train station (Rodūnios kl. 10A, Vilnius)**  
(they are very close to each other).



**Route:**  
Vilniaus oro uostas → Vilnius

**Time:** 8 min.      **Price:** 0,70 €



**Route:**  
buses No. 1 or No. 2 (direction: Stotis)

**Bus stop:** Stotis      **Time:** ~ 20 min.      **Price:** 1 € (with the student discount the price is 0,35 €)



**Take a taxi using an app,**  
it will be way cheaper as those standing at the airport have extra fees



**Rent a car at the airport or use either a “CityBee” or “Bolt” app**

2

**Go to Kaunas by bus or by train, check the schedules online**  
(it takes ~ 1–1:30 hours).

3

**Go to Kauno kolegija Higher Education Institution (Pramonės pr. 22A, Kaunas), check the schedules online.**

**\* The best option:**

**Route:** trolleybus No. 16 (direction Partizanų str. or Islandijos pl.)

**Bus stop:** Kauno kolegija

**Time:** ~ 20 min.

**Price:** paying by cash 1 € (with the student discount the price is 0,50 €)

paying with Žiogas 0,70 € (with the student discount the price is 0,35 €)

How to reach Kauno kolegija Higher Education Institution

# FROM VILNIUS AIRPORT



**Go to Kauno kolegija Higher Education Institution  
(Pramonės pr. 22A, Kaunas), check the schedules online.**

**\* The best option:**



**BY BUS**

## OPTION No. 1

**Route:**  
No. 29  
(direction: Geležinkelio stotis)

**Bus stop:**  
Murava

**Time:**  
~ 10 min.

**Price:**  
paying by cash 1 €  
(with the student discount the price is 0,50 €)  
paying with Žiogas 0,70 €  
(with the student discount the price is 0,35 €)

**Then walk to Kaunas University  
of Applied Sciences on foot  
for ~ 15 min.**

## OPTION No. 2

**Route:**  
No. 29  
(direction: Geležinkelio stotis)

**Bus stop:**  
PC "Savas"  
(cross to the other side of the road)

**Time:**  
~ 10 min.

**Price:**  
paying by cash 1 €  
(with the student discount the price is 0,50 €)  
paying with Žiogas 0,70 €  
(with the student discount the price is 0,35 €)



**Then cross the street and  
take another bus:**

**Route:**  
No. 6 or No. 41  
(direction: Technikos str. or Kaniūkai)

**Bus stop:**  
Kauno kolegija

**Time:**  
~ 10 min.

**Price:**  
paying by cash 1 €  
(with the student discount the price is 0,50 €)  
paying with Žiogas 0,70 €  
(with the student discount the price is 0,35 €)

**B**



**BY TAXI**

**Take a taxi using an app,**  
it will be way cheaper as  
those standing at  
the airport  
have extra fees

**C**



**BY CAR**

**Rent a car  
at the airport or use  
either a "CityBee" or  
"Bolt" app**



How to reach Kauno kolegija Higher Education Institution

# FROM KAUNAS TRAIN / BUS STATION

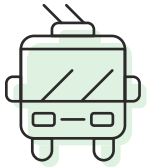
A

**Go to Kauno kolegija Higher Education Institution  
(Pramonės pr. 22A, Kaunas), check the schedules online.**

**\* The best option:**

**Route:**

trolleybus No. 16 (direction Partizanų str. or Islandijos pl.)



**BY TROLLEYBUS**

**Bus stop:**

Kauno kolegija

**Time:**

~ 20 min.

**Price:**

paying by cash 1 € (with the student discount the price is 0,50 €)

paying with Žiogas 0,70 € (with the student discount the price is 0,35 €)

B



**BY TAXI**

**Take a taxi using an app,**

it will be way cheaper as those standing at the airport  
have extra fees

C



**BY CAR**

**Rent a car at the airport or use  
either a “CityBee” or “Bolt” app**

## COMING BY CAR



If you decided to come to Lithuania by car,

**don't forget your driver's license!**

In Lithuania people must be 18 or over to drive a vehicle.



**All foreign driving licenses are recognized;  
however, by law, you must have a document that has  
a picture of you**

(if your driver's license does not have a photo we recommend  
carrying around a passport or ID card together with the  
driver's license).

# Upon Arrival



## Accommodation

All the students can apply for a room at the dormitory. All international students (full-time and exchange) are provided with a room if required.



## Unit for International Relations

The first working day after your arrival you should register at the Unit of International Relations (Pramonės pr. 22A, room 106).



## Lithuanian SIM card and internet

You should receive a Lithuanian SIM card from your mentor. After that, you can activate your internet in the dorm by using that SIM card. You can pay for the internet via e-bank or in cash in terminal “Perlas”. “Perlas” is a terminal service where you can pay your taxes, take out money from your debit / credit card, get insurance, pay fines. They are usually located in all grocery stores and gas stations.



## ISIC

ISIC is an international student identity card. After the Incoming Mobility Coordinator sends the confirmation letter to “ZigZag Travel” (E. Ožėškienės str. 27, Kaunas), you can go there and get your ISIC or you can choose to take your ISIC card from the Incoming Mobility Coordinator.

It is worth ordering a **Lithuanian Student Card (LSP)** if you are a full-time student because: › it is an official document that proves that you are a student;

- it is valid for the entire duration of your studies;
- you will be able to confidently use the systems and spaces of the higher education institution (e.g., the Library, inventory);
- you will benefit from a 50-80 percent discount on public transport (full-time students only, including international);
- benefit from exclusive partner discounts ([www.lsp.lt/pasiulymai](http://www.lsp.lt/pasiulymai)).

Book your LSP now here: [www.lsp.lt](http://www.lsp.lt)



# Upon Arrival

## Public transportation card



Public transportation card can be integrated into your ISIC card. If it is not included to your ISIC, you can buy a card valid in Kaunas called “Žiogas”. You can buy a card or you can use the app. In Lithuania, students have a 50 % discount for public transport (you must have your ISIC to prove eligibility for this discount).

## Meeting the International Coordinator of your faculty

Meet the International Coordinator of your faculty for all the necessary information.



Faculty of Arts and Education (A. Mackevičiaus str. 27, room 206; Pramonės pr. 20, room 1-41);

Faculty of Business (Pramonės pr. 20, room 4-21);

Faculty of Medicine (K. Petrausko str. 15, room 312);

Faculty of Technologies (Pramonės pr. 22, room 2-27).

Faculty of Alytus (Studentų str. 17, Alytus)

## Check your migration responsibilities



All non-EU citizens must have a valid visa to stay in Lithuania. If you have any questions regarding migration responsibilities, contact the Admission Coordinator (Unit for International Relations, Pramonės pr. 22A, room 106).

## Insurance



Before the mobility, students are required to get travel insurance covering the costs for healthcare, medical treatment, lost personal belongings, return flight etc. For EU citizens it is also recommended to get the European Health Insurance Card.

## Enjoy your stay and have fun!



If you have any questions, you are more than welcome to contact your mentor.

# Apps and tools for the study process

## Kauko email

With your login data, you will be able to access important KK systems and resources:

- Virtual Learning Environment Moodle
- Google Apps services and email Google Apps
- Eduroam, a wireless virtual private network (VPN) <https://www.kaunokolegija.lt/it-gidai/>
- Your account in the Virtual Library <http://vb.kaunokolegija.lt/>
- Subscription databases: <http://db.kaunokolegija.lt/>
- Dormitory self-service and reservation

## Moodle

All study-related materials and other relevant information in Kauno kolegija are available in the e-learning system Moodle. Steps of connecting to Moodle and enrolling in the virtual classroom of the course unit to be studied:

1. Open the Moodle website at <http://moodle.kauko.lt>.
2. Enter your username and password in the “Login” field and click on the “Login” button. Note: The login name must be entered without the ending @go.kauko.lt
3. In the top menu “Studies”, find the semester, your Faculty, your study programme and the course/ module to be studied.
4. The first time you log in to the virtual classroom of the course/module, you may be asked to enter the password provided by your lecturer.
5. A list of the courses/modules you have enrolled in can be found in the top menu under “My courses”.

## Study Management System (SVS)

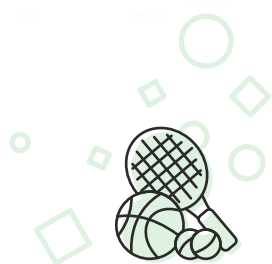
SVS login link <https://stud.edina.lt> In the SVS, you can:

- view and submit personal information contained in the SVS;
- see the requirements of the study programme you are studying and their fulfilment;
- find information about study courses/modules taught at Kauno kolegija;
- view interim and final evaluations of study courses/modules;
- see the credited study courses/modules.

## Library and scientific communication centre

In early September, you are kindly invited to participate in a training session and learn about the Library services, how to borrow and return books, how to use electronic resources, and lots of other useful information. The KK Library and Scientific Communication Centre are located in the Centre for Studies (22A Pramonės Ave., Kaunas). The Alytus Faculty Library can be found at 17 Studentų Str., Room 102, Alytus.





## **GET INVOLVED: Extracurricular Activities**

**Volleyball (men's and women's teams)**

**Football (men's national team)**

**Table tennis (men's and women's national teams)**

**Track and field athletics (women's team)**

**Basketball (men's and women's national teams)**

**Dance group**

**Art ensemble, KK Folk Dance Group "KauKas"**

**Roboclub**

**Group activities (yoga, body design, ball training, interval training, cross-training)**

---

**Training takes place in the gyms at 20 and 22 Pramonės Ave., Kaunas.**

Individual training sessions are available at the Active Movement Studio (at 22 Pramonės Ave.)  
from 9 a.m. to 2 p.m.

**More information and contact details can be found here:**

[www.kaunokolegija.lt/en/leisure-time](http://www.kaunokolegija.lt/en/leisure-time)



# Health and Wellbeing

## Health Care



In order to get any medical treatment or consultation students need to book an appointment first. You can do that by calling the selected Health Care Institution (HCI) or going directly to it. Please be aware that during the visit at the clinic you have to present your Health Insurance document together with an identification card or passport.

The doctor has the right to charge your visit if you do not have European Health Insurance Card (EHIC). Make sure you get a medical extract or doctor's explanation form (list of the health care services received) in such case. Remember: only the costs of necessary medical care are reimbursed at your home country in case you have to pay for the treatment.

Kauno kolegija Higher Education Institution does not provide health insurance, so students from non-EU/EFTA countries are required to get private Health Insurance from their countries prior coming to Lithuania.



# Health and Wellbeing

## Psychological Help



Kauno kolegija Higher Education Institution provides psychological help for students who experience difficulties related to studies or personal life. Every student is welcome to consult when feeling anxious, lonely, encountering difficulties, affected by personal problems, having lack of motivation or issues.

For live (20 Pramonės Ave, Kaunas) or remote consultation, you can email: [ginte.jaseliunaite@go.kauko.lt](mailto:ginte.jaseliunaite@go.kauko.lt)







## Interesting Facts about Kaunas

- 1.** Laisvės alėja (pedestrian street in the centre of Kaunas, built in 1847) is one of the longest pedestrian streets in Europe. Its length is exactly 1 mile or 1,6 km in metric standards and its directions point to East and West.
- 2.** Kaunas' coat of arms is the oldest known symbol in the entire history of the Grand Duchy of Lithuania. First seen around the 15th century.
- 3.** Kaunas is the symbol of Lithuanian ethnicity. Not so long ago, in 1897, natives in Kaunas made up only 4–6 % of the city's entire population. In 1923, around 58 % (over 50 000 Lithuanians). Now the numbers are around 92 %.
- 4.** At the end of the 19th century, the Russian TSAR government decided to make Kaunas a fortress by building 13 forts. Only 9 were built, but during WWI, the fortress collapsed after 11 days. During WWII, Nazi Germans used these forts for committing holocaust crimes.
- 5.** Kaunas has two of the oldest functioning funicular railways in Europe working since 1931 and 1935.
- 6.** Kaunas still has the oldest modern age sports venue in Europe, Kaunas Sports Hall. It was built in 6 months in 1939 for the European basketball tournament and was the most modern venue in Europe. Even though it does not meet any new European requirements, basketball games are still being played there from time to time.
- 7.** The oldest Zoo in Lithuania is located in Kaunas, which opened in 1938.
- 8.** Kaunas has the only brick-built mosque in Lithuania built in inner-war times. It was initiated by the Kaunas Tatar community. It's still functioning nowadays.
- 9.** Kaunas has the only Devils' museum in the entire world with over 3000 exhibits.
- 10.** Kaunas city is always trying to be unique and eco-friendly when we talk about Christmas. In 2011 Kaunas' main Christmas tree was made by using only recycled bottles.
- 11.** Kaunas city has the biggest oak tree park (Ažuolynas) in Europe, located near the city centre.
- 12.** One of the symbols of the city centre, the St. Michael the Archangel's Church (among locals better known as Soboras), was considered to be torn apart during the inner-war times because of politicians thinking that the church reminds of the imperial past, "slavery memories" and "being descendent of Russian art". No compromise was reached with the demolition, so Soboras was left to stand as it is

Thank you for choosing  
Kauno kolegija  
Higher Education Institution



kaunasuas.lt



/kauno.kolegija



/kaunokolegija



Kauno kolegija



Kauno kolegija

